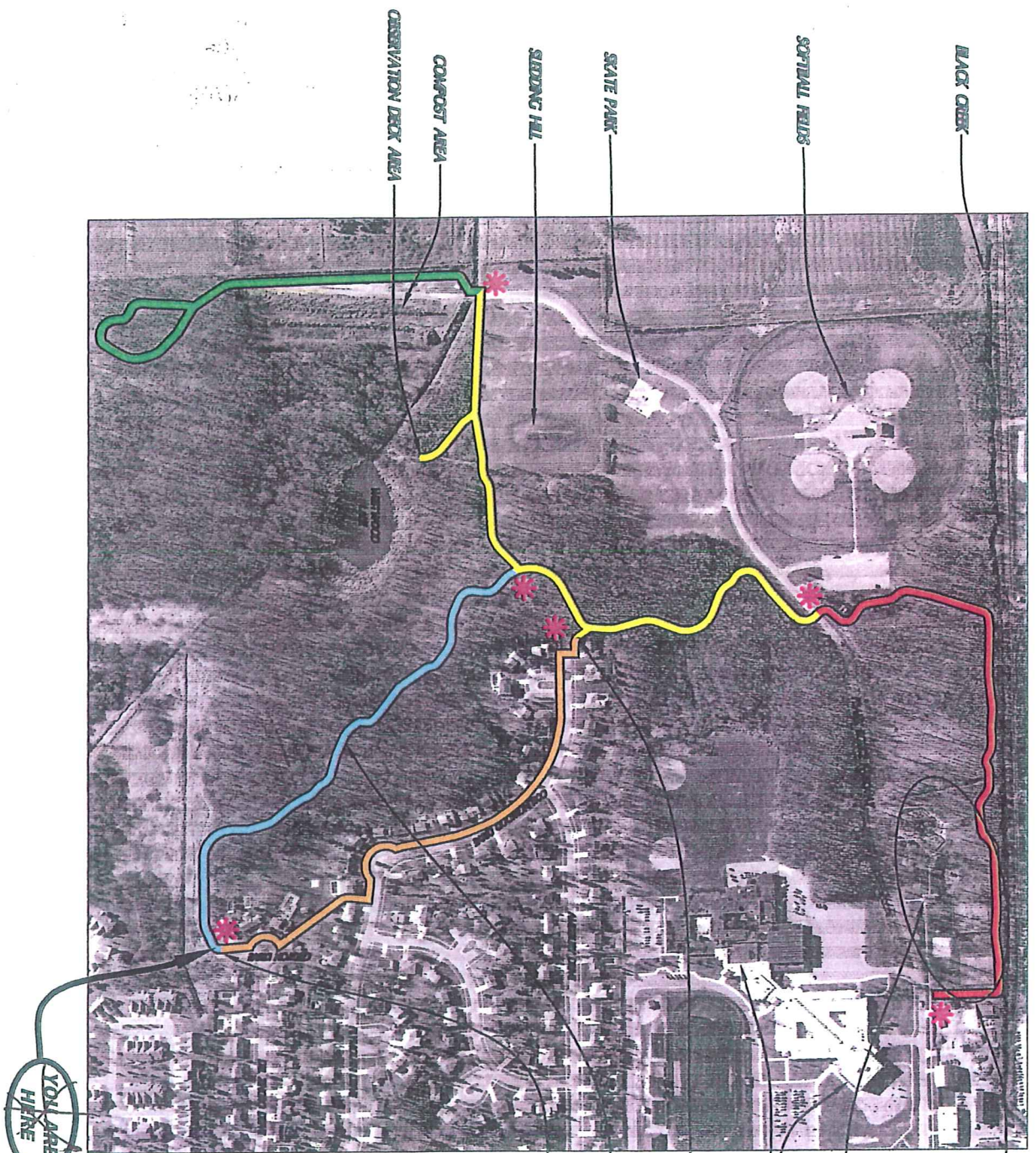


JACK N. ABERNATHY REGIONAL PARK SITE MAP



- BLUE TRAIL LOOP : 0.27 MILES
- RED TRAIL LOOP : 0.43 MILES
- YELLOW TRAIL LOOP : 0.49 MILES
- GREEN TRAIL LOOP : 0.35 MILES (LOOP : 0.55 MILES)
- SLEDGING SHERWALK : 0.39 MILES
- ★ PARK MAP LOCATION

- TEMPS COURTS, PAVILIONS, AND FAISCAFE AREA
- NESTROONS
- DAVISON MIDDLE AND INTERMEDIATE SCHOOLS
- CONNECTION TO SHERWALK AT COLLINGWOOD DRIVE
- WOODEN BOARDWALK
- CONNECTION TO SHERWALK AT GROTON DRIVE